

## Stay Alert. Stay with Others. Speak Up.



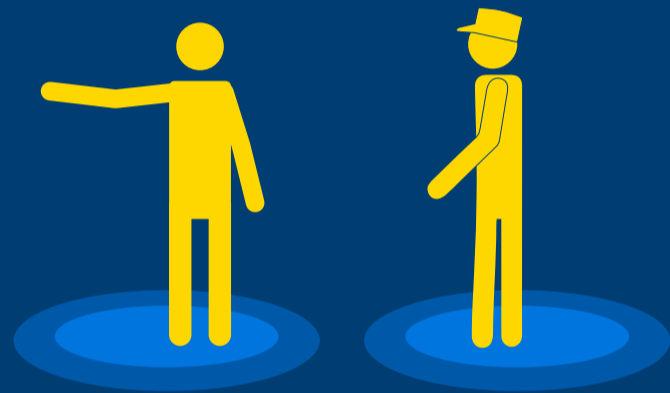
### Stay alert.

- ✓ Always be aware of your surroundings and the people around you, day or night.
- ✓ Use caution while using your cell phone or when wearing headphones near tracks or while waiting on station platforms.
- ✓ Trust your instincts. If someone or something makes you feel uneasy, move away, change seats and ask for help.
- ✓ Do not use or wear anything that will impede your vision or hearing.



### Speak up.

- ✓ Scan your surroundings and report anything suspicious.
- ✓ Ask a Conductor for help.
- ✓ Share your concerns with a security guard or police officer.
- ✓ Call or text Metrolink's Security Operations Center (866) 640-5190 to report.



### Stay with others.

- ✓ Travel with another rider or in a group.
- ✓ Stay near other people.



### Station safety.

- ✓ Look both ways before walking through parking lots. Use the marked crosswalks where provided.
- ✓ Watch your surroundings. Leave any places in which you are uncomfortable.
- ✓ Remove all valuables from plain view inside your vehicle.
- ✓ Park in well-lit areas. Avoid parking in secluded parts of a parking lot. Stick to high traffic areas.
- ✓ Observe all signs and signals on the platform and at pedestrian crossings.

